

Little Judique

D

A7

Musical staff for the first system, top line. It features a treble clef, a key signature of two sharps (F# and C#), and a common time signature (C). The melody consists of eighth and quarter notes, with a prominent eighth-note triplet in the first measure.

Harmony

Musical staff for the first system, Harmony part. It features a treble clef, a key signature of two sharps, and a common time signature. The accompaniment consists of quarter and half notes, providing harmonic support for the melody.

Cello

Musical staff for the first system, Cello part. It features a bass clef, a key signature of two sharps, and a common time signature. The part includes a long, sweeping slur over several measures, indicating a continuous melodic line.

3rds
&
5ths

Musical staff for the first system, 3rds & 5ths part. It features a treble clef, a key signature of two sharps, and a common time signature. This part provides harmonic accompaniment using triads and dyads.

D

Musical staff for the second system, top line. It features a treble clef, a key signature of two sharps, and a common time signature. The melody continues with eighth and quarter notes, including a triplet.

Harmony

Musical staff for the second system, Harmony part. It features a treble clef, a key signature of two sharps, and a common time signature. The accompaniment continues with quarter and half notes.

Cello

Musical staff for the second system, Cello part. It features a bass clef, a key signature of two sharps, and a common time signature. The part includes a long, sweeping slur over several measures.

3rds
&
5ths

Musical staff for the second system, 3rds & 5ths part. It features a treble clef, a key signature of two sharps, and a common time signature. This part provides harmonic accompaniment using triads and dyads.

D7 G D Em D A A7

11

Harmony

11

Cello

11

3rds & 5ths

11

D A D A

16

Harmony

16

Cello

16

3rds & 5ths

16

21

D A E A

Harmony

21

Cello

21

3rds
&
5ths

21

26

D A D A E7 A A7

Harmony

26

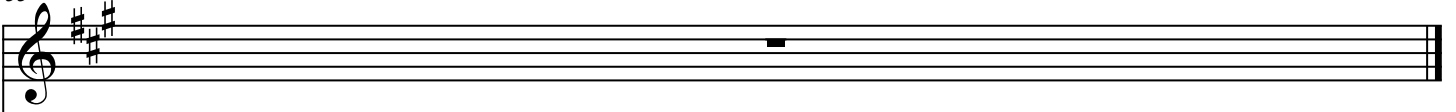
Cello

26

3rds
&
5ths

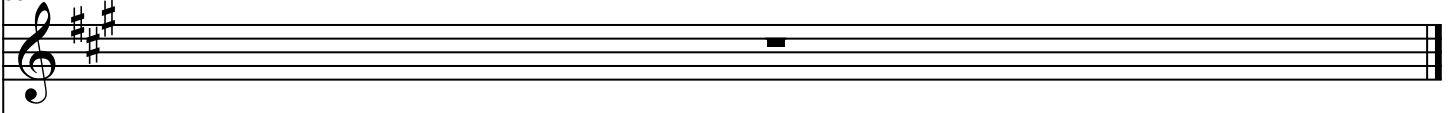
26

33



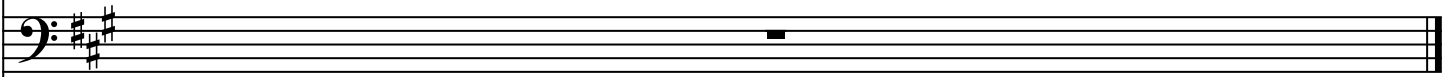
33

ony



33

Cello



33

3rds
&
5ths

