

Harmony

# Margaret's Waltz & Walpole Cottage

Fiddle-icious 2026

Pat Shaw

## Margaret's Waltz (play 8ths w/swing)

Musical notation for Margaret's Waltz, measures 1-9. The key signature is three sharps (F#, C#, G#) and the time signature is 3/4. The first ending is marked '1.' and the second ending is marked '2.' with a fermata over the final notes.

Musical notation for Margaret's Waltz, measures 10-19. The key signature is three sharps (F#, C#, G#) and the time signature is 3/4.

Musical notation for Margaret's Waltz, measures 20-25. The key signature is three sharps (F#, C#, G#) and the time signature is 3/4.

## Walpole Cottage

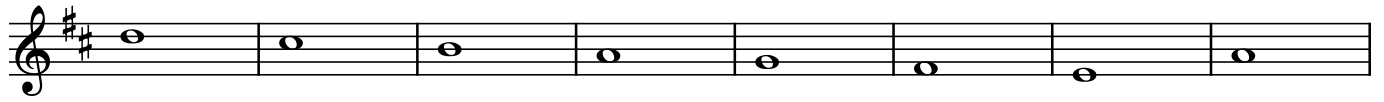
Musical notation for Walpole Cottage, measures 26-37. The key signature is three sharps (F#, C#, G#) and the time signature is 3/4. Measure 26 contains a triplet of eighth notes.

Musical notation for Walpole Cottage, measures 38-45. The key signature is three sharps (F#, C#, G#) and the time signature is 3/4.

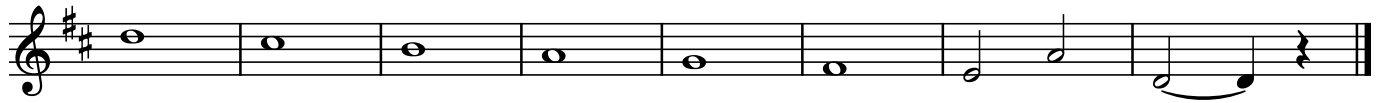
Musical notation for Walpole Cottage, measures 46-53. The key signature is three sharps (F#, C#, G#) and the time signature is 3/4.

Musical notation for Walpole Cottage, measures 54-61. The key signature is three sharps (F#, C#, G#) and the time signature is 3/4.

62



70



78

⊕ Coda

